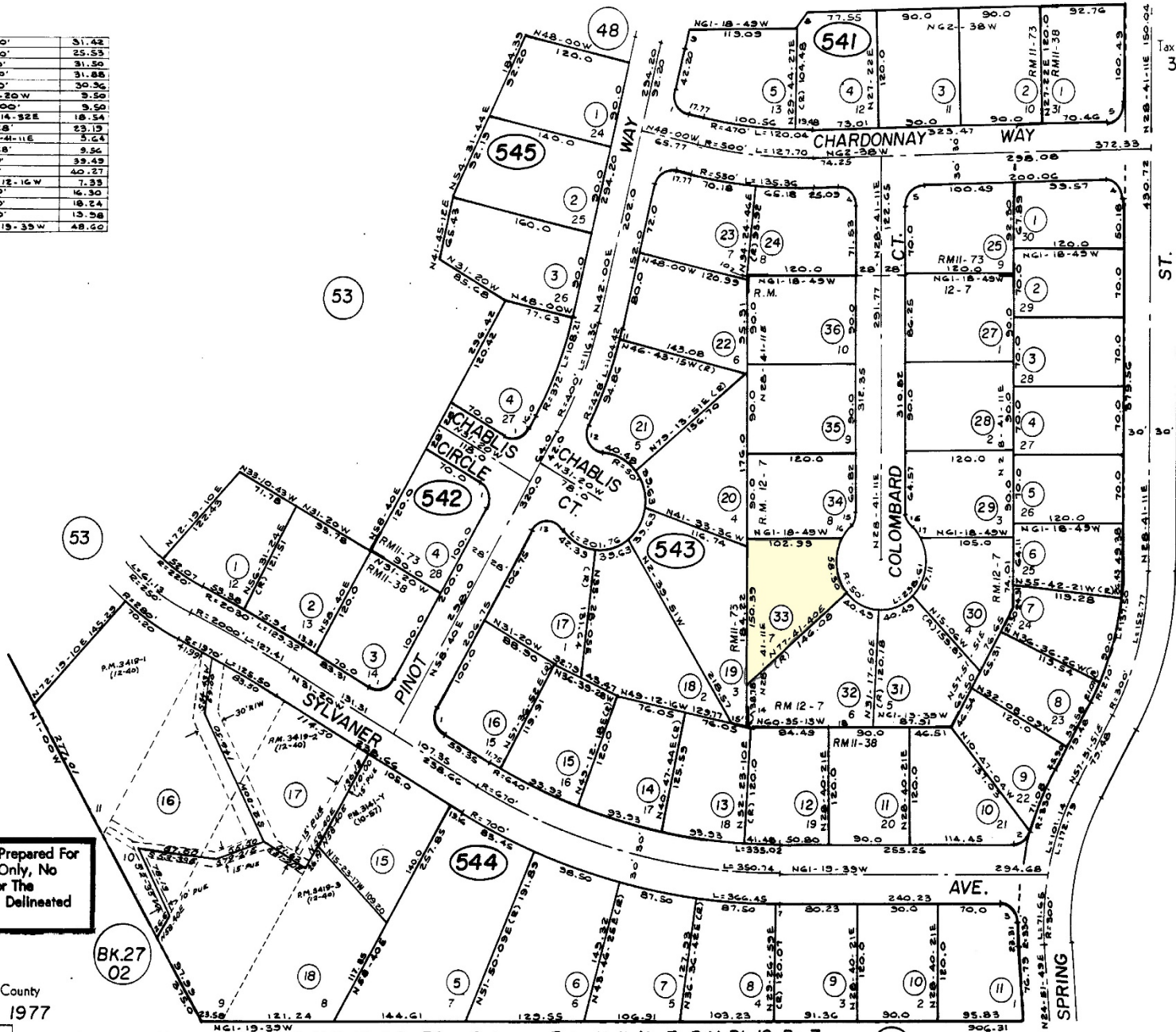
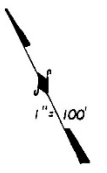


1	R:20'	31.42
2	R:20'	25.55
3	R:20'	31.50
4	R:20'	31.88
5	R:20'	30.36
6	N81-20W	3.50
7	R:700'	3.50
8	N62-14-S2E	18.54
9	R:328'	23.19
10	N28-41-11E	3.64
11	R:428'	3.54
12	R:20'	32.49
13	R:20'	40.27
14	N43-12-16W	7.33
15	R:20'	16.30
16	R:20'	18.24
17	R:50'	13.98
18	N61-19-33W	48.60



**NOTE:** This Map Was Prepared For Assessment Purposes Only, No Liability Is Assumed For The Accuracy Of The Data Delineated Hereon.

Assessor of Napa County  
 REVISIONS 1977  
 5-2-79  
 7-1-81

Sylvaner Ests. Unit No.5 R.M. Bk.11, Pg.38  
 Sylvaner Ests. Unit No.6 R.M. Bk.11, Pg.73  
 Sylvaner Ests. Unit No.7 R.M. Bk.12, Pg.7